

Project News

September 2020

Biological Process Improvements

Optimizing the Wastewater Treatment Process

In late 2020, LOTT Clean Water Alliance will begin a major construction project at the Budd Inlet Treatment Plant. The Biological Process Improvements project will optimize the treatment process that removes nutrients from wastewater. The biological process is critical to effectively treat the wastewater, ensure LOTT complies with strict permit limits, and protect water quality in Budd Inlet. The biological process was last upgraded in 1994.

Timeline

Due to the scale and complexity of the project, construction will occur in stages over several years. Work must be carefully sequenced to avoid disruption of essential plant operations. Project completion is anticipated in the spring of 2023.

Location

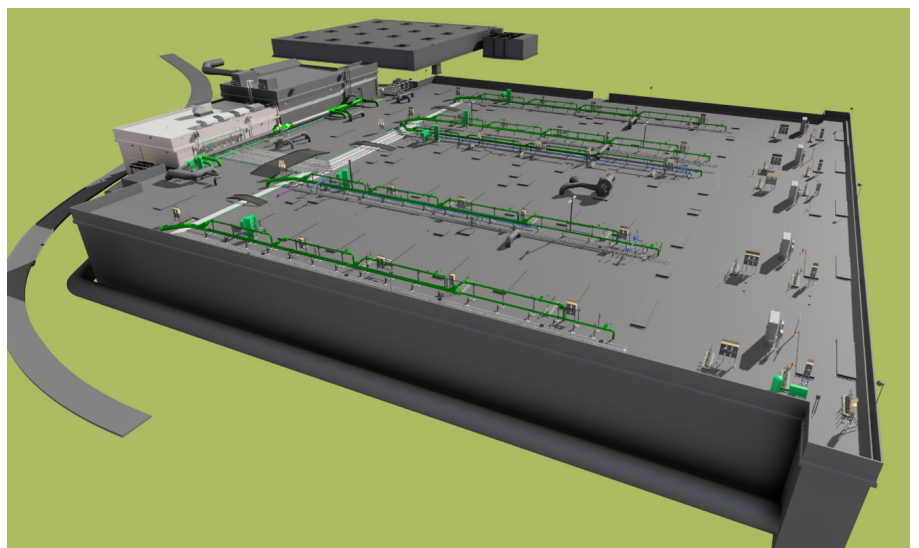
Construction will occur on the site of the Budd Inlet Treatment Plant just south of Marine Drive, between Franklin and Jefferson Streets in northeast Olympia.

Project Benefits

The Biological Process Improvements project is necessary to replace aging equipment, enhance operational control and flexibility, and increase process reliability. It will also greatly improve energy efficiency by employing new technologies and reducing pumping requirements. Energy savings are anticipated to be greater than 20% of total plant energy use. Consolidating several processes will free up valuable space within the plant footprint that can be used for flow equalization and future process expansion. LOTT has conducted extensive planning and design to refine the project scope and balance costs and benefits.

Costs and Funding

The construction cost is approximately \$29 million. The project will be funded by LOTT's capital budget and low interest loans through the Department of Ecology Water Quality Program and Department of Commerce Public Works Board.



Due to the scale and complexity of this project, construction will occur in stages over several years.

Design and Construction Contractors

Parametrix (Puyallup, Washington) is the design engineer and Prospect Construction (Puyallup, Washington) is the construction contractor.

Anticipated Impacts

Most of the construction work will occur within the plant boundary. However, there will be occasional disruptions to pedestrian and vehicle traffic along Franklin Street and Marine Drive. There may be increased truck traffic and noise during working hours. Pipeline modifications along Marine Drive will require removal and replanting of trees and landscaping.



There will be occasional disruptions to pedestrian and vehicle traffic outside of the treatment plant boundary.